

Incidental knee lesion

G Y Tseng 曾偉業, W C G Peh 白振源

Clinical history:

A 60 years old woman presented with pain over the left knee. Anteroposterior (AP) and lateral radiographs of the knee were performed (Figures 1 & 2).

Figure 1: Anteroposterior radiograph of the left knee

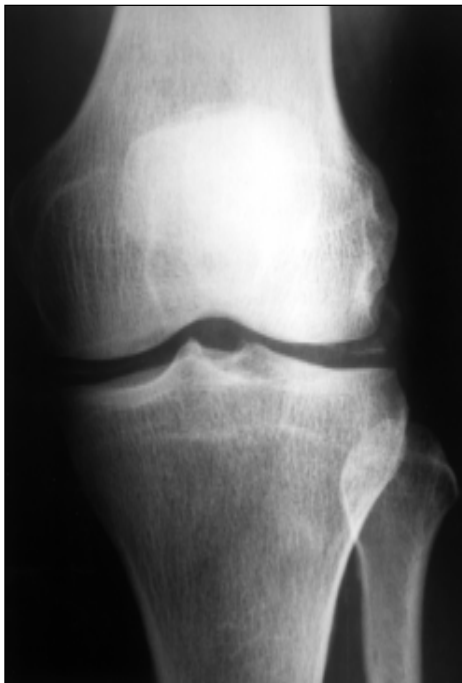


Figure 2: Lateral radiograph of the left knee



What is the diagnosis?

- a) Chondrocalcinosis
- b) Bone infarct
- c) TB arthritis
- d) Synovioma
- e) Synovial osteochondromatosis

*See page 357
for the answer*